

Kanyu, Fengshui and Court Energetics

PART III

**FENGSHUI CONSULTATION
FOR SHAMBHALA CENTRES**

Based on the teachings of Eva Wong

Editor: Peter C. van der Molen

Version: 13012012

Contents

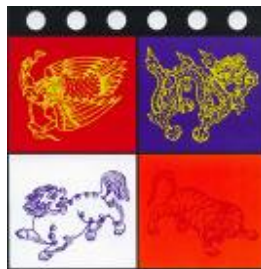
INTRODUCTION	3
COLOPHON	3
INTRODUCTION ON FENGSHUI.	4
FENGSHUI IN A SHAMBHALA CENTRE?	5
HOW TO GET A CONSULTATION AND HOW TO PREPARE?	6
SOME BACKGROUND	9

INTRODUCTION

As human beings we aim at leading a happy and meaningful life, in which we not only need to care for ourselves and those around us, but also want to develop in a spiritual sense in order to work with our daily experiences. Many traditions over many millennia have aimed at providing the conditions for a happy life and spiritual development. In Asia some traditions stand out in this sense: in Tibet it is the Buddhist spiritual path and the Warrior traditions that have evolved over many lifetimes. In China the Daoist path and the wisdom traditions of K'an-yü and Fengshui have provided the means for spiritual development as well as the means to live harmoniously with the land.

In their efforts, Sakyong Mipham Rinpoche and Eva Wong strive to bring these traditions together to shape a bright and clear path for spiritual development as warriors in the modern day world. In this document we will discuss Sacred Space, or the spatial conditions that will allow us to connect with our Basic Goodness or Buddha Nature, through meditation practices, rituals and ceremonies. The depth of the connection made depends of course on many factors such as effort, insight, wisdom and karma. But apart from the mental space, it also depends on the physical space one is in.

In this document we will focus on the application of Fengshui in our Shambhala practice centres, in order to make optimal use of the space we have.



COLOPHON

This overview is a small reminder of the various aspects that have been addressed during the consultation by Eva Wong. It is based on notes made during several consultations throughout Europe between 2002 and 2006.

For further reading:

- <http://www.shambhala.com/fengshui/>
- Wong, E. 1996. *Fengshui, the ancient wisdom of harmonious living for modern times*. Shambhala Publ. 276 pp.
- Wong, E. 2001. *A master course in Fengshui*. Shambhala Publ. 393 pp.

INTRODUCTION ON FENGSHUI.

General

The Shambhala vision is vast and extends beyond our national borders and beyond our lifetimes. In fact we are the inheritants of countless generations of ancestor warriors, who paved this particular path. We in turn will be ancestor to countless generations of warriors succeeding us. The mandala we help to build has as its view the notion of Enlightened Society, which is based on compassion and fearlessness.

With that view, we are creating sacred spaces to attain enlightenment. Space effects the mind and therefore it is important where you practice. You also gain or loose people by space, so this adds weight to the carefulness with which we select appropriate locations to fulfil certain purposes.



*Immortal Zhang with
a lo-p'an, a Chinese
geomantic compass*

The land is the most powerful carrier of energy and in Asian countries landforms are studied and used, to determine the optimal configuration for aligning their inherent energy with human effort and purposes. This is used for spiritual, governmental and for domestic purposes.

What is Fengshui?

The purpose of Fengshui is to study the way the energy of the land affects the people living on it. So ideally, we would lay-out our cities and houses and their appearance, in accordance with the landforms and their energies. In that we align land energy with human energy. The words *Fengshui* actually mean 'wind' and 'water'. These have multiple meanings, all connected with dispersion and collection of energy.

Authentic Fengshui practitioners are more concerned with these aspects of land, time and compass-directions, than with for example the colours of your walls. The energy of the land is very strong and exerts a constant influence on us. Also heaven or time makes energy fluctuate.

You might wish to consult a Fengshui practitioner to learn how you can best use a space for your house or business. That space should facilitate your health, your well-being, your finances and your spiritual development. Your space should not work against you.

During a consultation, a practitioner of classical Fengshui will describe the environment of your house or business, and he/she will ask you for the building date of the house and your own date of birth. In addition he/she will take some readings with a special Chinese compass called a Lo-p'an. The outcome will show you the visible and invisible energies at work in your home or business. Knowing these, you will get advice on how to plan the usage of the various rooms and spaces. This will benefit your health, wealth, relations and mind.

FENGSHUI IN A SHAMBHALA CENTRE?

Why a Fengshui consultation?

A Fengshui consultation helps a Shambhala Centre to determine the energetics patterns in an area and how to make the best use of that. That means looking for the optimal areas within a city or area to establish a centre that will support growth and development of the centre. Simultaneously avoiding areas that would harm or obstruct a Shambhala Centre. When suitable search areas have been established, a Fengshui consultation will help you with the search for the right building or property. This concerns not only the location in the neighbourhood, but also specific architectural features and the lay-out of the building and the energetic implications.

Finally a Fengshui consultation will help to reveal the hidden energetic patterns that reside in a building and how to work with these. You can compare this to some extent as a medical check-up: the doctor will examine your body and provide you with his conclusions on the state of health of your body and organs. Then you know what you can do: with a healthy body you can start training to run a marathon, but when the check-up reveals that you have a heart-condition, you might consider playing chess. It is the same way with a building: once you know the energetic patterns inside you know if it will support your activities and how far, or that it will work against you.

When to do it and how does it work?

Kanyu/Fengshui evaluations could occur at several different points over the course of a Centre's growth and development. Depending on the situation, an evaluation could be made in relation to determining the **best location within a city** for a Shambhala Centre, **the most suitable property or building** for the Centre within a selected neighbourhood, or the **ideal plan or building design** for the Centre in or on any given property. These evaluations could apply to Centres involved with either purchasing or leasing options.

A. Determining the location - Identifying the drala patterns of the region.

1. To begin with, a qualified member of the Advisory Panel would use (aerial) maps to identify the drala basins in the initial search for new site.
 - a. This work can be done off-site. Consultation fees may apply.
2. Next a qualified member of the Advisory Panel would make a site visit to the city in question. Consultation fees and expenses will need to be negotiated.
 - b. Meet with local search/development group and give a short explanation on energies in the land and the drala patterns in that area. Also an explanation on search-criteria for a new property.
 - c. Drive around and scout possible neighbourhoods or specific sites.
 - d. Education of local leadership and community.
 - e. Recommend optimal types of properties or buildings.
 - f. Establish follow-up procedures on evaluation of properties.

B. Selecting the building or property

1. A qualified member of the Advisory Panel would give feedback and recommendation on potential properties or buildings identified by the local center, based on recommendations made during the Fengshui site visit.
 - a. The preliminary phases of work can usually be done off site, with photos and Google links. Consultation fees may apply.
 - b. Should a potential building be considered in earnest then a visit to the site by the qualified member of the Advisory Panel is needed. Consultation fees and expenses will need to be negotiated

C. Developing the building or floor plan design

1. In conjunction with the Centre's architectural design and development team, Fengshui evaluations would typically occur during the **schematic design phase of the project**. These would involve review and approval of any schematic site plans, floor plans, or building elevations. Consultation fees may apply.
2. In conjunction with the Centre's architectural design and development team, Fengshui evaluations would also occur during the **final design phase, prior to the project being submitted for any Building Permits**. This could involve review of the full set of construction documents. Consultation fees may apply.

HOW TO GET A CONSULTATION AND HOW TO PREPARE?

Who to ask?

The Panel for Shambhala Environments can help you with getting a proper and authentic Fengshui consultation for your local centre. **Dr. Eva Wong** oversees this aspect of the Advisory Panel's services. Dr. Wong is a lineage holder of the Hsüan-k'ung (Mysterious Subtleties) school of traditional Chinese Fengshui as well as a practitioner of the San-yüan (Three Periods) and San-ho (Three Combinations) schools. She is the author of two books on Fengshui:

- *Fengshui: The Ancient Wisdom of Harmonious Living for Modern Times*, and
- *A Master Course in Fengshui*

She is also the translator or author of numerous books on Taoism. You can read more on her work on: <http://www.shambhala.com/fengshui/>

Particularly for Shambhala Centres in North America (USA and Canada) and Central and South America, you can contact Dr. Wong through sending an email to:

info@shambhalaenvironments.com

For Shambhala Centres in Europe you can contact Dr. Wong's representative: Dr. Peter C. van der Molen. You can reach him through sending an email to:

juniperservices@hotmail.com or through his website: <http://www.juniper-services.com>

What do you need to provide?

Much depends on the process a Shambhala Centre is in: do you start a search for a first property or building? Do you have an existing property or building and do you want to renovate, or do you want to move? With every situation different questions will come up regarding a Fengshui consultation. In order to start the communication it helps to provide some basic information that can be quickly assessed in order to help you further.

General information:

- State the **name** of your Shambhala Centre or Group.
- Details of the **contact person**: name and telephone numbers and email address, etc.
- **Overview** of your Shambhala Centre or Group: where are you now, how many members/visitors, rough indication of proportion of people in various practice levels.
- What is the **situation** of your local centre? Do you want to look for a new or different property, or do you want to renovate? Do you have a suggestion for a new property or building that you want to have evaluated?

Specific information

For the evaluation of a **specific property or building** we need:

- **Address** of the building.
- **Aerial photo**: it often helps to make a screen-dump of a Google-maps picture to indicate which building it is. See below in Box 1 how to do this.

- **Construction or Renovation date:** When was the building was constructed or renovated. For more explanation on this see Box 2 below.
- **Floor plan:** try to obtain or draw a floor-plan. The proportions and overall measurements of the various rooms and corridors etc. Indicate the windows! Make sure that it is possible to understand how the aerial photo and the floor-plan relate to each other.
- **Photo's of the property:** it is very helpful to have pictures of the outside and inside of the building. That means taking pictures of:
 - The front and back of the building.
 - The entrance.
 - A series of pictures of a 'walk-through' from the street to inside.
- **Put this information into a pdf-file.** In this way all information is kept together in one document, there is no misunderstanding with other properties and it usually allows you to create documents that contain a lot of information and pictures, yet are reasonable in size and can be sent through email.

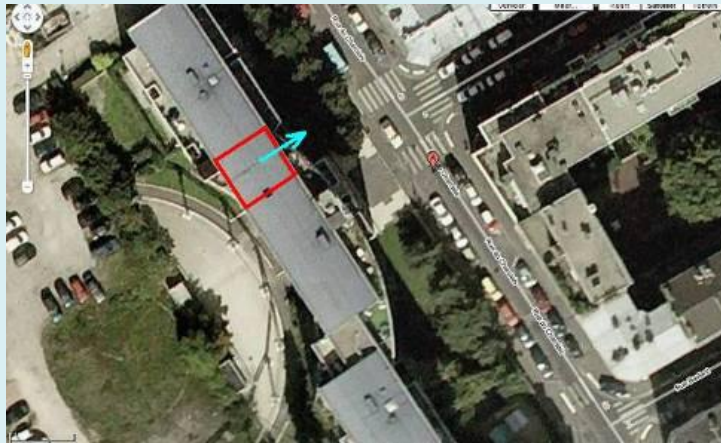
BOX 1: Google Maps pictures

An aerial photo from Google Maps is extremely helpful for the assessment of the building. However it is important to indicate on the picture which building it is exactly:

This will be the result for *29 Rue du Charolais* in Paris, France. However the little red dot does not say which building is involved exactly.



Simply indicate the location of the property within the building as well as some indication of the front of the property, or the side with the most windows.



BOX 2: Construction or Renovation Date

The construction year gives the house a particular energetic behaviour. For this a construction year is translated to a Chinese Cycle. The Chinese calendar knows 9 Cycles of 20 years. Below the nine Cycles are indicated, as well as their starting year. So for example we now are in the 8th Cycle, which started in 2004 and will end in 2024. After the ending of the 9th Cycle, in 2044, a new 1st Cycle will start.

STARTING YEAR	CYCLE NUMBER
1864	1
1884	2
1904	3
1924	4
1944	5
1964	6
1984	7
2004	8
2024	9

So you need to find out in which **YEAR** the **construction was completed**. As you will see, that is sometimes very critical since it makes a difference if a building was constructed in 2003 or in 2004: so between the 7th and 8th Cycle. However if the owner only can tell that the building was constructed "somewhere during the 1990's", then that is fine for they will all be in the 7th Cycle.

As a rule: find the most accurate year.

Now often buildings have undergone **renovations**. With that we mean **changes in the floor-plan** and not whether the building was fitted with new window-panes or painted. So were walls torn down or erected? Try and find out if the floor-plan has been changed and what has been done. Did they create new windows or doors? When were the renovations carried out?

As a rule: find out about any renovations, what was done and find the most accurate year.

SOME BACKGROUND

What are 'Flying Stars'?

There are two forms of energy: those that are visible and those that are not. The visible energies influence one immediately. We all know the feeling when we enter a space: a house is for example 'cosy' or 'desolate' perhaps even 'creepy'.

There is another form of energy which is invisible but has profound influence on us. Over many centuries Chinese experts have found a way to make these energies visible through the so called 'Flying Stars', which are number combinations. These are determined by changes in the flux of energies through a landscape and have a time and a direction component. In the first two paragraphs a short explanation is provided to shed some light on this topic. This will make the remainder of this chapter easier to understand.

During a Fengshui consultation – a lot of time and attention will be devoted to the land and to the physical surroundings and structure of the Shambhala Centre.

At some point – also a Flying Star chart will be calculated, which is used to identify invisible energetic patterns that have bearing on the usage of the property. In order to understand this –somewhat technical part of the consultation- the little introduction below is provided.



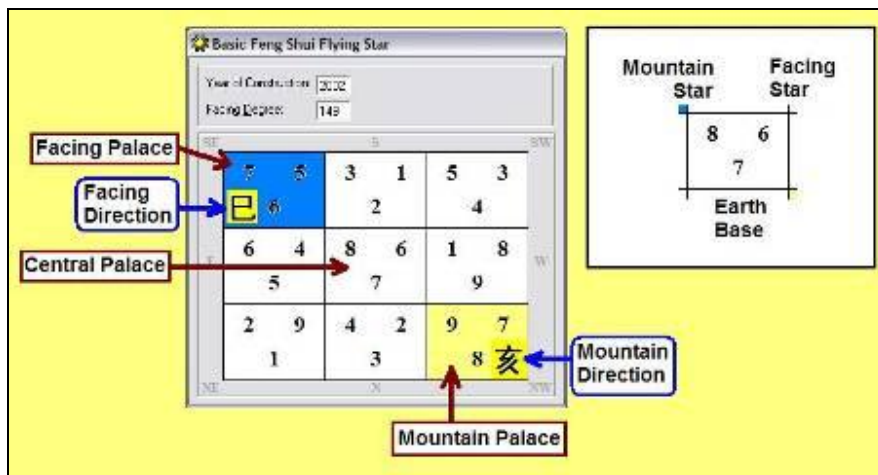
Lo-p'an, a Chinese Geomantic Compass

The Flying Stars and the Flying Star chart

The **Flying Stars** provide information on the invisible energies, at work in the building. These energies are created the moment that the house is **built** or rejuvenated when **substantially renovated** (this is the time component) and through the front and rear **compass directions** of the house (directional component).

The front direction, called the **Facing direction**, is that side of the house from which it receives the most energy. Generally it is the side with the most unobstructed view. The opposite side of the house is called the **Mountain direction**.

The time of building or renovation provides us with the **Earth Base (abbreviated as EB)**. The compass directions provide us with the **Facing Star (FS)** and **Mountain Star (MS)** respectively. They are indicated in a specific place in each square of a chart.



Example of a Flying Star Chart

The Earth Base is the star that arose at the construction of the building. Its energy rises and falls throughout the nine cycles of the Chinese calendar. The Facing or Water Star determines how energy enters a building. The Mountain or Sitting Star indicates the ambient energy. The energy coming from the frontal or Facing Direction has more strength than the energy from the rear or Mountain Direction. Therefore the Facing Star is more powerful and its influence will spread faster. Therefore a malevolent Facing Star is worse than a malevolent Mountain Star, but a beneficial Facing Star is likewise comparatively better.

Each chart consists of 9 squares or **Palaces**. The one in the middle is called the Central Palace, the ones on the front and rear logically Facing and Mountain palace respectively. The Facing Palace is important because the energy entering the building is 'coloured' by the specific conditions in this Palace. The Central Palace is important, for the conditions here apply to all parts of the building.

The analysis is performed on the combinations of numbers present in each palace of the chart. Over many centuries Chinese Fengshui practitioners have, and still do, studied and evaluated the effect of certain number combinations. Therefore, in a Fengshui analysis these combinations are identified, analysed and interpreted.

First attention is paid to the number combinations in the entire chart, then the number combinations in the individual palaces are analysed. Special attention is paid to the relationship between the *Earth Base* and the Facing Star.

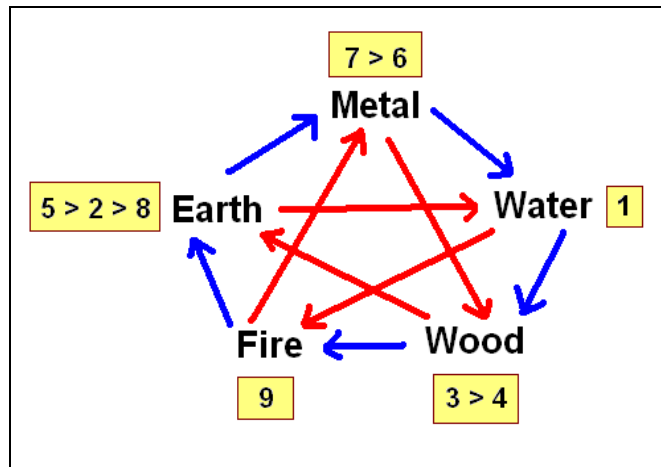
When unfavourable number combinations are encountered, often counter-measures can be suggested. The nature of the countermeasures depends on the character of each number and the relative position it occupies in each palace.

Countermeasures

Sometimes there are unfavourable energetic aspects present. Countermeasures can only strive to lessen a harmful influence and possibly neutralize bad situations. They cannot turn bad situations into good situations.

Countermeasures work through influencing the elements associated with the numbers in the palaces. The nature of the countermeasures depends on the character of each number and the relative position it occupies in each palace. Basically it works through the five elements: *Fire, Earth, Metal, Water* and *Wood*, and their mutual nourishing, or destructive relationships:

One can for example destroy an unfavourable *Earth Base 5* – *Facing Star 9* combination, indicative of accidents that will lead to injury or even death, by adding the *water* element in that palace. The *water* energy will directly destroy the *fire* energy of 9-purple (red arrow). Since *earth* energy (the element of 5-yellow) destroys *water* energy, it will lose energy in doing so and will get drained in the process.



The blue arrows are the nourishing relationships, the red the destructive. In the boxes: the Flying Star numbers and their relative strength.

Various countermeasures can be suggested and are phrased in terms of elements. In practical terms this can be realised as follows:

Adding **Fire-energy** can be managed through strong lighting. Never add real fire!



Strong lights in the house



Pictures of fire



Candles of LED-lights



Real candles in safe containers

Adding **Metal-energy** can be achieved through placing nice *Metal* (bronze, iron, brass, silver) art-objects there.



Modern horse sculptures



Ancient Buddha statue



Antique Garuda plaque



Modern metal sculpture

Adding **Wood-energy** is possible through living plants but also high quality artificial flowers from silk or plastic – as long as they look real, but also through nice wooden art-objects there



Ancient Chinese statues



Ikebana



Ikebana



Modern wood sculpture

The **Earth-energy** can be introduced through ceramic objects, sand or decorative stone.



Navaho Sand painting



Art by Andy Goldsworthy



Modern Japanese sculpture



Modern ceramics

Adding **Water-energy** can be achieved by for example fountains, glass objects or glass vases with water inside or even pictures of waterfalls, waves and water features. Tabletop fountains come in three varieties: unidirectional flow, multidirectional flow or more creative designs with water.



Unidirectional flow



Multidirectional flow



Creative design



Creative design